

How to Download Data from the National Map Viewer

Contents

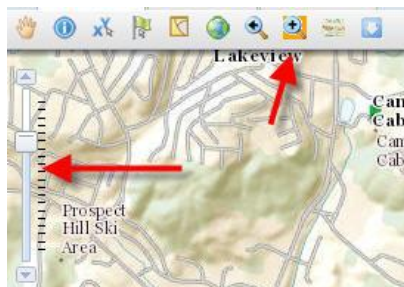
Find Data	1
Download Data	2

The National Map has a variety of datasets available:

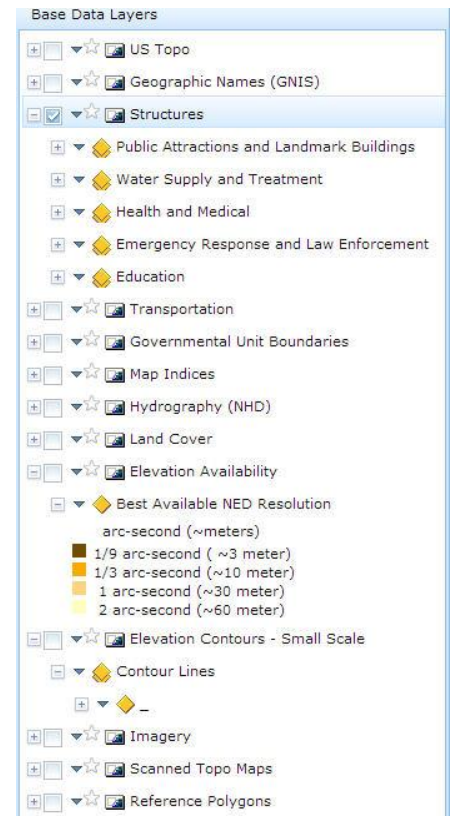
- US Topo maps (digital)
- Historical scanned Topo maps
- Geographic Names for places, structures, parks, hydrology, etc.
- Structures (point file)
- Transportation: roads, airports
- Government boundaries: reserves, counties, congressional districts, etc.
- Hydrography: watershed boundary dataset, waterbody, flow direction, flow line, etc.
- Land Cover: 1992, 2001, 2006
- Elevation and contours
- Present-day imagery

Find Data

1. Access the National Map Viewer here: <http://viewer.nationalmap.gov/viewer/>
2. Zoom into your area of interest using the tools at the top of the screen.

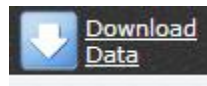


3. Check off and expand the data categories on the left to see what data is available for your area.

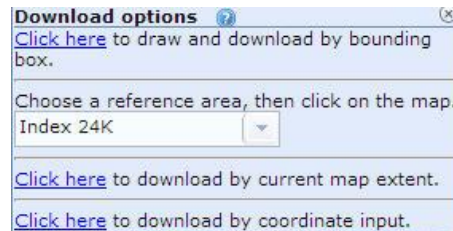


Download Data

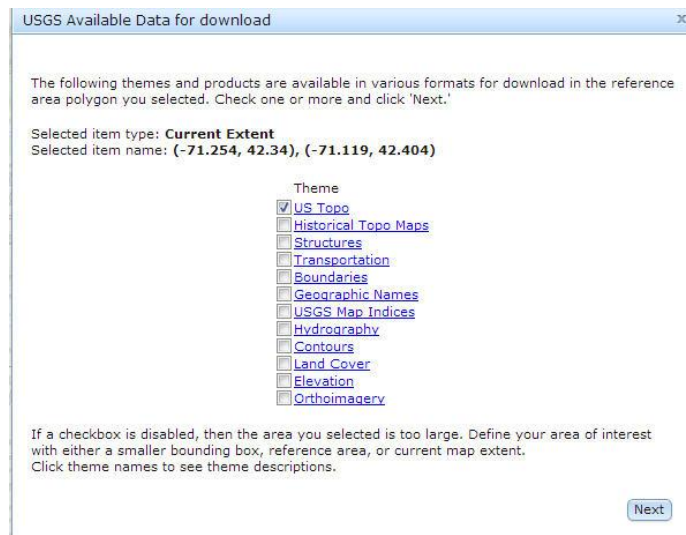
4. Click Download Data in the top right to select your datasets.



5. Choose to download by drawing a bounding box, selecting an index/reference box, using the current map view (extent) or entering coordinates.

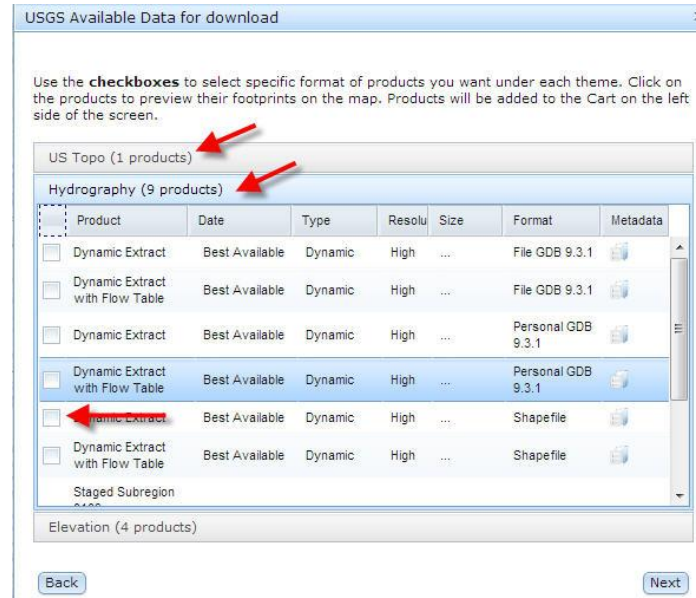


6. Check off the dataset(s) you wish to download and click next.
Note: If you want a digital elevation model (DEM) you can use in GIS to draw contours or analyze elevation, select "Elevation" rather than US Topo. US Topo is only available as a geopdf, which cannot be read in ArcMap.

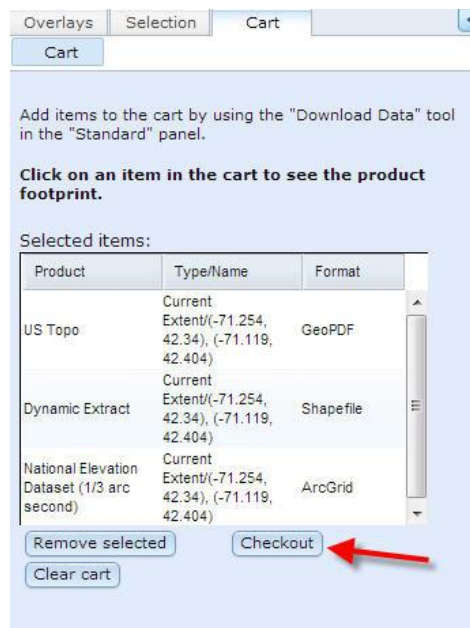


- Expand each data category and check off the file format you want and click Next. The items will be added to your cart.

Note: For elevation datasets, choose ArcGrid as the format.



- Click Checkout.



9. Enter your email address and click Place Order. You will receive an email with a download link.

Cart

Please enter your e-mail address below. You will receive a message containing links to download the data you selected.

E-mail address:

Re-enter e-mail address:

10. Your email will contain download links to each piece of data.

Thank you for your recent data order placed with The National Map Viewer. Below are the details of your order with specific instructions.

Order ID: 386006

US Topo - Below are the links to download the data you requested.

Product	Extracted by	Format	Download Link
Boston North, Massachusetts, 6/13/2012	Current Extent/(-71.254, 42.34), (-71.119, 42.404)	GeoPDF	Click here to download
Boston South, Massachusetts, 6/13/2012	Current Extent/(-71.254, 42.34), (-71.119, 42.404)	GeoPDF	Click here to download
Lexington, Massachusetts, 6/15/2012	Current Extent/(-71.254, 42.34), (-71.119, 42.404)	GeoPDF	Click here to download
Newton, Massachusetts, 6/13/2012	Current Extent/(-71.254, 42.34), (-71.119, 42.404)	GeoPDF	Click here to download
Concord, Massachusetts, 6/6/2012	Current Extent/(-71.254, 42.34), (-71.119, 42.404)	GeoPDF	Click here to download
Natick, Massachusetts, 6/6/2012	Current Extent/(-71.254, 42.34), (-71.119, 42.404)	GeoPDF	Click here to download

Hydrography - Your request is currently processing. Your order will be delivered from NHDAutoEmailer@usgs.gov typically immediately.

Product	Extracted by	Format	Download Link
Dynamic Extract	Current Extent/(-71.254, 42.34), (-71.119, 42.404)	Shapefile	E-mail notification

Elevation - Below are the links to download the data you requested. Due to the size of raster data, your request may have been broken

Product	Extracted by	Format	Download Link
National Elevation Dataset (1/3 arc second) 1/1	Current Extent/(-71.254, 42.34), (-71.119, 42.404)	ArcGrid	Click here to download

Download footprint data: [KML](#)

Certain products that are not “pre-packaged” may be available for download at a later time, as was the case with the hydrography data above. You will receive another email later.

11. After downloading the data, unzip the files before using them in ArcMap.